

Since 1940

WISCONSIN ENERGY *Cooperative*

April 2023

NEWS



Price Electric
Cooperative

Your Touchstone Energy Partner

THE POWER BEHIND
OUR POWER:
WE SALUTE OUR
LINEWORKERS

OBSERVING EARTH DAY

CONTACT YOUR CO-OP BEFORE
MAKING THE CALL ON SOLAR

AMERICA'S FUEL MIX IS CHANGING



NATIONAL LINEMAN APPRECIATION DAY

National Lineman Appreciation Day is April 18, 2023. PEC proudly recognizes all electric lineworkers for the services they perform around the clock, 365 days a year, in dangerous environments to keep power flowing and protect the public's safety.

To become a journeyman lineman, it can take more than 8,000 hours of training (or about four years) because working with high-voltage equipment requires specialized skills, experience, and an ongoing mental toughness. Shortcuts are not an option, and there is no room for error in this line of work.

During severe weather events that bring major power outages, linemen are among the first ones called. They must be ready to leave the comfort of their home and families unexpectedly, and they don't return until the job is done, often days later. That's why the lineman's family is also dedicated to

service. They understand the importance of the job to the community.

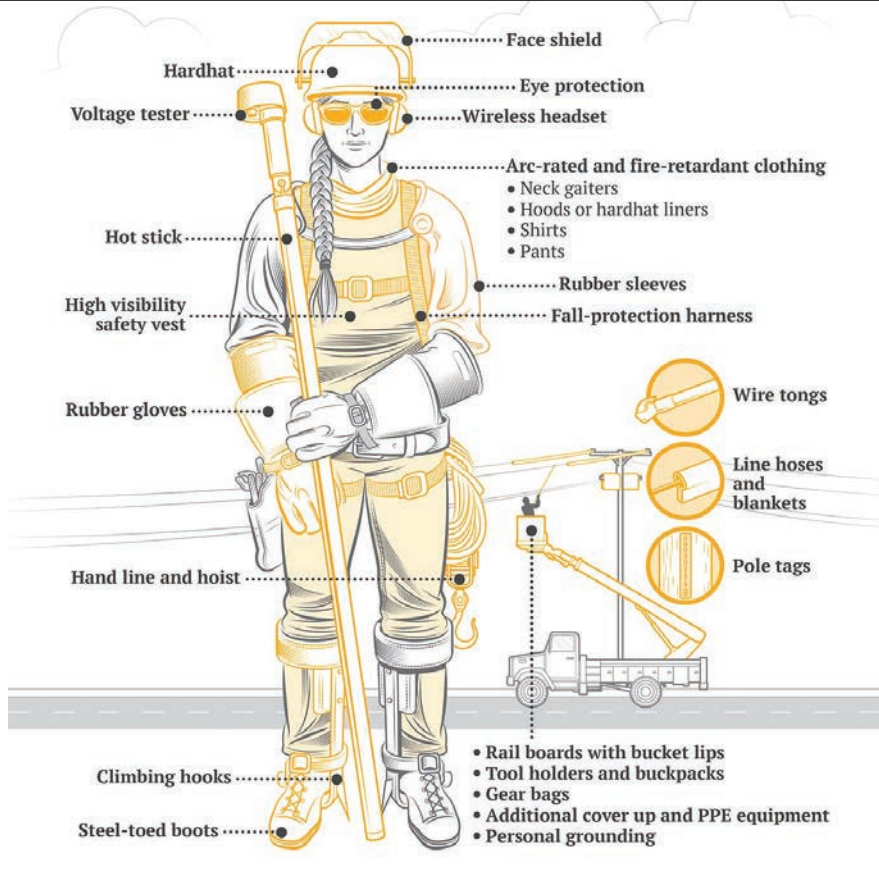
PEC's crew maintains 1,815 miles of power lines across nine counties and 3,500 square miles.

Next time you see a lineman, or member of PEC's crew, please thank them for the work they do to keep the power flowing, regardless of the time of day or weather conditions.



Staying Safe

Lineworkers have a dizzying array of gear they carry and wear to safely do their jobs. Some items, like climbing hooks and hot sticks, have been around since the early days of electricity, though they've been updated and improved over the years. Others, like wireless headsets and arc-rated clothing, are more modern innovations. Here's a comprehensive (though not exhaustive) look at the tools line crews use to stay safe.



Youth Leadership Conference

UW-Stout | July 11-13, 2023

Youth Leadership Conference (YLC) is a dynamic three-day event for high school students across Wisconsin to develop their leadership skills while learning about the purpose, operation, and scope of cooperative business.



While at YLC, you will:

- See what makes the cooperative business model different and successful, then apply this knowledge to fun and challenging cooperative activities.
- Identify and learn how to develop your own leadership skills.
- Discuss cooperative careers with industry professionals.
- Be entertained and challenged by highly acclaimed motivational speakers who understand young adults and talk about topics that are relevant in your life.

Who can apply?

- High school sophomores or juniors with family members who belong to PEC.
- Students active in their school and community. This event is a great resumé builder!
- Students who are interested in learning more about their own leadership skills and the cooperative business model.

What does it cost?

- Students should contact PEC for application and sponsorship information.
 - Phone: 715-339-2155
 - Email: memberservices@PriceElectric.coop
- PEC sponsors a select number of students to attend YLC.

Applications can be found on the PEC website.

CALLING ALL THIRD-GRADERS:

You're invited to participate in the
Wisconsin Electric Cooperative Association's

ELECTRICAL SAFETY POSTER CONTEST

Submit an original poster supporting electrical safety to your local electric cooperative by **May 31, 2023**, for a chance to win a **\$25 gift card!** The top three posters will be entered into the statewide poster contest for a chance to win one of three great prizes:

- 1st place – Chromebook**
- 2nd place – \$100 Gift Card**
- 3rd place – \$75 Gift Card**



Posters should be at least 8.5x11 inches, but no larger than 11x14 inches.

Entries must include completed entry form and student's name on the back of the poster.

Contact your local electric cooperative or go to www.weca.coop for registration forms.



TREE TRIMMING IMPROVES SERVICE FOR ALL

Here in northern Wisconsin, we are fortunate to have so many trees that offer beauty, shade, and a habitat for all sorts of birds and other wildlife. PEC strives to balance maintaining beautiful surroundings and ensuring a reliable power supply by keeping power lines clear in rights-of-way (ROW).

While we recognize and appreciate the beauty of trees, there are three main benefits to tree trimming in ROW areas. A right-of-way (ROW) is the land PEC uses to construct, maintain, replace, or repair underground and overhead power lines. Rights-of-way enable the co-op to provide clearance from trees and

other obstructions that could hinder the power line installation, maintenance or operation. ROW areas are typically on public lands or located near a business or home. Regardless, PEC must be able to maintain the power lines above and below the ROW. The overall goal of PEC's vegetation management program is to provide reliable power to all members while maintaining the beauty of the community. Proactive vegetation management benefits co-op members in three ways.

Safety First and foremost, we care about members and put their safety and that of our lineworkers above all else.

Overgrown vegetation and trees pose a risk to power lines. For example, if trees are touching power lines in members' yards, they can pose grave danger to families. If children can access those trees, they can potentially climb into a danger zone. Electricity can arc, or jump, from a power line to a nearby conductor like a tree. A proactive approach also diminishes the chances of fallen branches or trees during severe weather events that make it more complicated and dangerous for lineworkers to restore power.

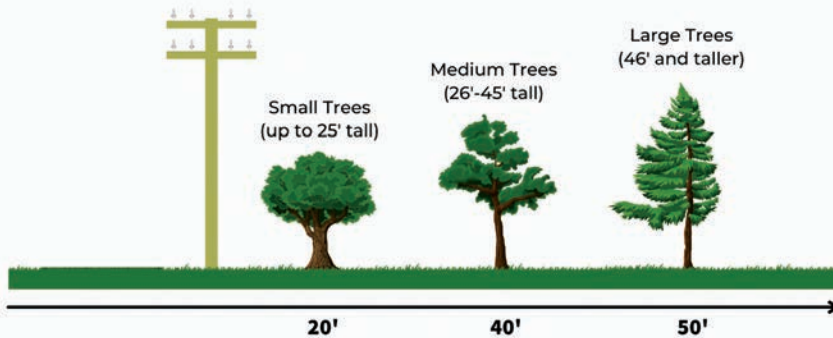
Reliability One of the biggest benefits of a smart vegetation management program is reliability. Strategic tree trimming reduces the frequency of downed lines causing power outages. Generally speaking, healthy trees don't fall on power lines, and clear lines don't cause problems. Proactive trimming and pruning keep lines clear to promote reliability.

Affordability PEC is a not-for-profit cooperative, and that means we strive to keep costs in check to keep rates affordable. This extends to vegetation management. If trees grow too close to power lines, the potential for expensive repairs also increases. Effective tree trimming and other vegetation management efforts keep costs down for everyone.

Through vegetation management, we are better able to keep the power lines clear, prepare for future weather events, and secure the reliability of the grid. PEC's crews and contractors may be in your area in the coming weeks and months, working to trim or cut trees in the right-of-way areas.

Plant the RIGHT TREE in the RIGHT PLACE

The larger the tree, the farther it should be from a power line. Avoid planting beneath power lines, near poles or close to electrical equipment.



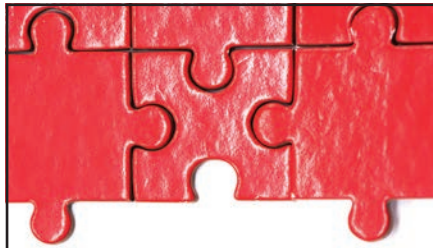
Remember, know what's below by calling 8-1-1 before you dig.

Learn more at: [SafeElectricity.org](https://www.SafeElectricity.org)

Director Elections coming up!

There is still time to turn in your candidate petition. Petitions are due to the PEC office on **Friday, April 7, 2023**. This year's annual meeting will be held June 8, 2023, at the Phillips High School.





Price Electric Puzzler

How closely are you reading the *WEC News*? Find the answer to the question below for your chance to receive a \$25 bill credit. Drop off or mail your answer to Price Electric or email your answer to memberservices@PriceElectric.coop. A winner will be drawn from all correct entries the last day of the month.

Last month's Puzzler winner was Kathleen Clevén.



How many linemen does PEC have?

Answer _____

Name _____

Account Number _____

Phone _____

Email _____

Please return to Price Electric Cooperative,
P.O. Box 110,
Phillips, WI, 54555

REMINDER

At-large and non-traditional scholarships are due to PEC by **April 28, 2023**. Application details can be found on the PEC website.



Smart Sense

Update

As of February 28, 2023 \$15,524.92 has been distributed through the Smart Sense Rebate Program. Visit PriceElectric.coop or contact PEC to find out how you can save by choosing energy efficient products!



The May issue of the *WECN* magazine, which will include your annual report, will be arriving about two weeks late.

WISCONSIN
ENERGY
Cooperative
NEWS

Energy Efficiency Tip of the Month

This planting season, include energy efficiency in your landscaping plans. Adding shade trees around your home can reduce surrounding air temperatures as much as 6 degrees. To block heat from the sun, plant deciduous trees around the south side of your home. Deciduous trees provide excellent shade during the summer and lose their leaves in the fall and winter months, allowing sunlight to warm your home.

Source: energygov



Jeff Olson, President/CEO

W6803 Springs Drive, P.O. Box 110, Phillips, WI 54555
715-339-2155 • 800-884-0881
www.PriceElectric.coop

Office Hours: Monday–Friday, 7:30 a.m.–4 p.m.

Amy Klimowski, Editor



**Price Electric
Cooperative**

Your Touchstone Energy® Partner