

Since 1940
WISCONSIN
ENERGY
Cooperative
June 2023 **NEWS**



**Price Electric
Cooperative**

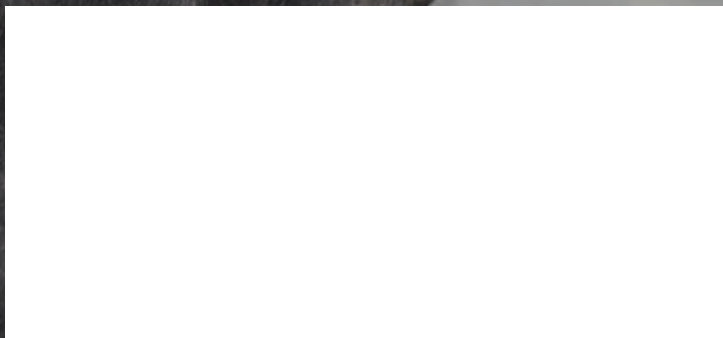
Your Touchstone Energy® Partner 

FOR THE LOVE OF
DAIRY

**TRANSFORMER RULE PAIN,
LITTLE GAIN**

KIDS AND CRITTERS

DAIRY DELICIOUS RECIPES





Price Electric Cooperative

Your Touchstone Energy® Partner



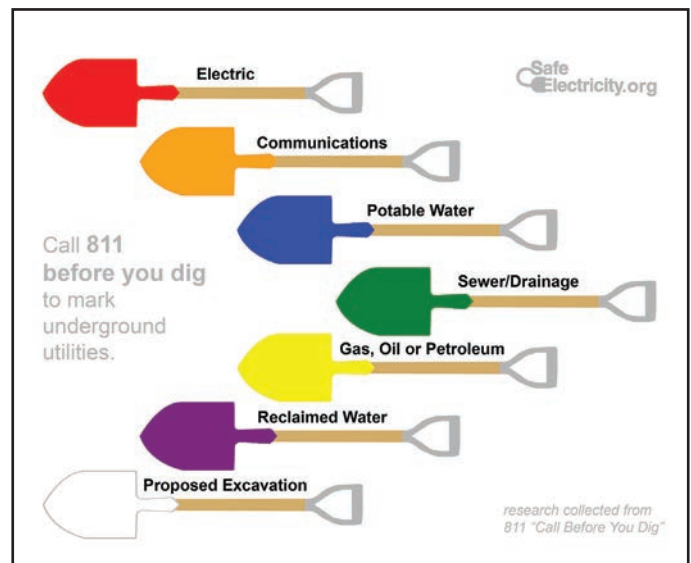
About 811:

- 811 is the national “Call Before You Dig” phone number. It was created to help prevent people from coming into contact with underground utility lines during digging projects.
- The first step in safe digging is to call 811 or visit call811.com before ever starting any digging project.
- Reach out at least two to three business days prior to starting a digging project. It takes a few business days for professionals to come mark your utilities with flags and/or spray paint.
- Make sure to tell the operator where you plan to dig and what type of work you will be doing. The 811 operators will then route you to a local utility locating service. Then mark where you plan to dig with white spray paint or flags.
- After contacting 811, locators will then be sent to your digging location to mark the areas where public utility lines are buried.
- 811 locators do not locate privately installed facilities. To find those, you will need to hire a private locator.

- Remember, other people and businesses may also rely on these utilities buried in the yard.
- Always respect the utility markings and dig with care.
- If you accidentally come in contact with an underground utility, do not bury the problem. Your priority should be evacuating the area for safety. It can be difficult to locate exactly where a problem is after the damage occurred and was buried. Damage to some underground utilities can cause dangers and inconveniences miles away from the actual site of the damage.
- Small nicks in underground wires can be expensive, but necessary, to fix. If you nick an underground utility, notify your utility provider. Do not attempt to fix the problem yourself.

For homeowners and contractors:

- Even if you previously had utilities located by calling 811, it is best to call before every digging project. Underground utilities can shift, and it is important to be certain of where they are before ever putting a shovel in the ground.
- Make sure all utilities are marked before beginning a digging project and that you are wearing all the proper protective gear.
- There is no project too small or task too menial that you don’t have to take the proper precautions before a digging project.



PEC COST-OF-SERVICE STUDY

As noted in last month’s issue, a cost-of-service study is currently being performed. Please watch for updates in the July issue.



USING A GENERATOR?

8 DANGEROUS MISTAKES PEOPLE MAKE



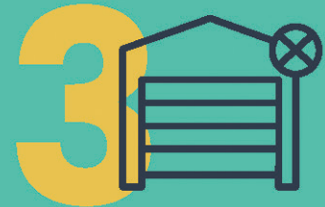
1 IN ENCLOSED SPACES

Always use it in a well-ventilated area.



2 NEAR WINDOWS OR DOORS

Place it at least 20 feet away from windows and doors.



3 IN A GARAGE

Even if the door is up, never use a generator in a garage.



4 IN THE ELEMENTS

Run it on a dry surface under a canopy-like structure (but not in a carport).



5 PLUGGED INTO A WALL OUTLET

This can be deadly to you, family members, neighbors or utility workers.



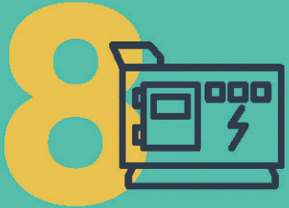
6 WITH THE WRONG EXTENSION CORD

Use a properly rated cord to plug appliances into a generator.



7 WITHOUT CARBON MONOXIDE (CO) TESTERS

CO detectors should be on every level of your home (test them monthly).



8 IN DISREPAIR

Make sure your generator is well-maintained and in good working order.



LEARN MORE AT:

 Safe Electricity.org®



BEAT THE SUMMER PEAK

If you look around your home, you likely have more devices and equipment that require electricity than ever before. Our connected lives are increasingly dependent on more electricity to function. At the same time, as demand for electricity rises, PEC must deliver an uninterrupted 24/7 power supply—regardless of market conditions or other circumstances.

Electricity use fluctuates throughout the day based on consumer demand. PEC must be able to provide enough electricity to meet the energy needs of all members during times of highest energy use or “peak hours.” These peak times are typically in the morning as people start their day and in the evening as people return to their homes.

BEFORE 8:00 a.m.
Use the oven
Shower
Do laundry

8:00 a.m. to 3:00 p.m.
Close window coverings
Unplug appliances not in use

AFTER 3:00 p.m.
Grill supper outdoors
Use countertop appliances or a microwave (instead of the oven)
Turn off circuit breakers for electric hot water heaters (Water will remain hot for hours; turn the breaker back on later)

AFTER 8:00 p.m.
Wash dishes
Set the dishwasher or other appliances to start after 10:00 p.m.
Shower

OVERNIGHT
Charge your electric vehicle

You can help by making these energy use adjustments to your day:

IN GENERAL

-  Turn up your thermostat
-  Use fans in occupied rooms to cool off
-  Turn off and disconnect electronics not in use
-  Turn off lights
-  Turn off stand-alone dehumidifiers
-  Turn off all non-essential pumps and motors

What you may not know is that electric utilities including PEC typically pay more for electricity—either from a power plant or from another utility with excess power—during those morning and evening “energy rush hours.” In addition, the demand for electricity is even higher when it’s especially warm outside, when cooling systems must run longer to cool our homes.

During peak periods when the cost to produce and purchase power is higher, we encourage you to take simple steps to save energy, such as turning your thermostat up a few notches, turning off unnecessary lights, and waiting to use large appliances during off-peak times.

You can also save energy by plugging electronics and equipment such as computers, printers, and TVs into a power strip, then turn it off at the switch during peak hours. If you have a programmable thermostat, adjust the temperature to be higher when you are away. Small changes like these can go a long way!

2023 CALENDAR PHOTO CONTEST

The PEC photo contest for the 2024 calendar is still open! Submit your best photos by July 31, 2023, to be entered!

Photo Contest Criteria:

- Photos must be taken within the Price Electric Cooperative service area.
- Photos should capture life in northern Wisconsin (seasons, wildlife, landscape, etc.)
- Photos must have a horizontal (landscape) orientation.
- Photos can be in color or black and white.
- Photos must be high resolution—at least 300 dpi and 8"x10".

Photo Contest Rules and Details:

- Three (3) photos per member will be accepted.
- All PEC members 18 years and up are eligible to submit photos.
- A PEC member under 18 is eligible to participate but must submit a parent/guardian form with entry.
- A completed entry form must accompany each photo.
- Member must own rights to photo.
- PEC employees and PEC's Facebook page will determine the winning photos.

**Entry forms and parent/guardian forms can be found on the PEC website, picked up at the PEC office, or emailed upon request*



Price Electric Puzzler

How closely are you reading the *WEC News*? Find the answer to the question below for your chance to receive a \$25 bill credit. Drop off or mail your answer to Price Electric or email your answer to memberservices@PriceElectric.coop. A winner will be drawn from all correct entries the last day of the month.

Last month's Puzzler winner was Sasha Priest.



What color flag indicates there is electric buried?

Answer _____

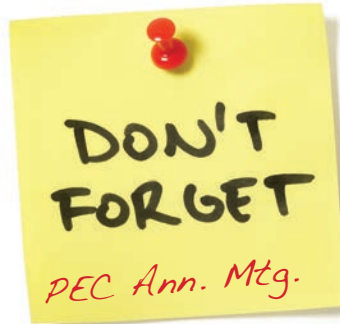
Name _____

Account Number _____

Phone _____

Email _____

Please return to Price Electric Cooperative,
P.O. Box 110,
Phillips, WI, 54555



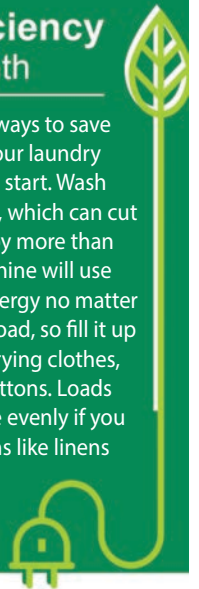
The 2023 PEC Annual Meeting is Thursday, June 8, 2023, at Phillips High School.

- Dinner at 5 p.m.
- Business Meeting at 6 p.m.

Energy Efficiency Tip of the Month

Looking for additional ways to save energy this summer? Your laundry room is a great place to start. Wash clothes with cold water, which can cut one load's energy use by more than half. Your washing machine will use the same amount of energy no matter the size of the clothes load, so fill it up when you can. When drying clothes, separate the heavier cottons. Loads will dry faster and more evenly if you separate heavier cottons like linens and towels from your lightweight clothing.

Source: Dept. of Energy



Jeff Olson, President/CEO

W6803 Springs Drive, P.O. Box 110, Phillips, WI 54555
715-339-2155 • 800-884-0881
www.PriceElectric.coop

Office Hours: Monday–Friday, 7:30 a.m.–4 p.m.

Amy Klimowski, Editor



**Price Electric
Cooperative**

Your Touchstone Energy® Partner