

Since 1940

WISCONSIN ENERGY *Cooperative* NEWS

April 2024



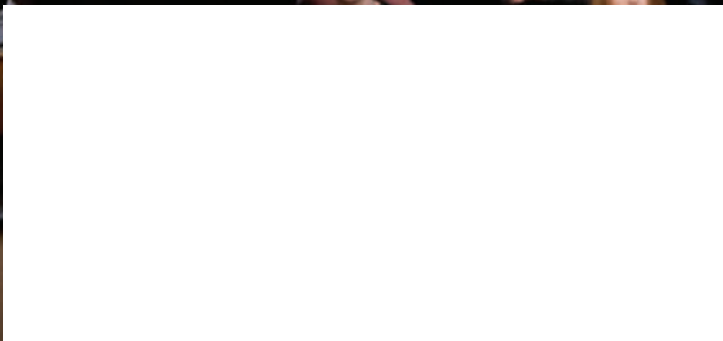
Price Electric
Cooperative

Your Touchstone Energy® Partner

In AWE of LINEWORKERS

**CELEBRATE EARTH DAY:
TAKE STEPS TO CONSERVE**

ENJOY SOY RECIPES





Unsung Heroes:

ELECTRIC LINeworkERS

In rural Wisconsin where communities are spread far and wide, PEC's linemen serve as a lifeline—connecting families, businesses, and farms. Being a lineworker is not an easy profession, as it takes years of specialized training, ongoing education, dedication, and equally important, a sense of service and commitment.

Lineworkers are ranked as one of the ten most dangerous jobs in the country. The linemen at PEC work rain or shine, often in harsh conditions to ensure you have reliable electricity. Often, they are sacrificing time with their own families to ensure yours are safe and comfortable, which is why we are celebrating Lineman Appreciation Day on April 18, 2024.

As we continue forward and navigate through challenges, let us take a moment to acknowledge and appreciate the tireless efforts of our linemen. Next time you see a lineman, please thank them for their exceptional service.

PEC'S PAYMENT OPTIONS



Automatic Payments

Autopay can be set up using a credit/debit card or checking/savings account. The payments will be withdrawn on the 20th of every month. No receipt or proof of payment will be sent. If the 20th is a holiday or weekend, funds will be withdrawn the next business day.



Budget Billing

This payment option is designed to eliminate the seasonal variations in your energy bills, so your bill amount remains stable every month. To sign up, visit the PEC website or call for an application.



Mail Your Payment

Payments via personal check or money order can be mailed to PO Box 110, Phillips, WI 54555.



Pay By Phone

Call 888-222-2135 to make payments using our interactive voice response secure payment system. Just follow the prompts to pay by check or credit/debit card.



Smart Hub

Smart Hub, PEC's online payment and usage portal, is a free service for members to make payments, sign up or change autopay, and view usage. To sign up for Smart Hub, visit the PEC website and under the "Manage Your Account" heading on the homepage, click "Register for Online Access".



In-Person

Visit the PEC office at W6803 Springs Drive in Phillips to submit payment with a consumer service representative or drop off payment in the 24/7 drop box located just outside of the front office doors.

2024 Scholarships

LOCAL HIGH SCHOOL

If you attend Butternut, Chequamegon, Phillips, Prentice, or Rib Lake high school, see your guidance counselor for application information. Scholarships are only available to seniors whose parents or guardians are active PEC members. Two \$1,000 scholarships are available at each school.

AT-LARGE & NON-TRADITIONAL

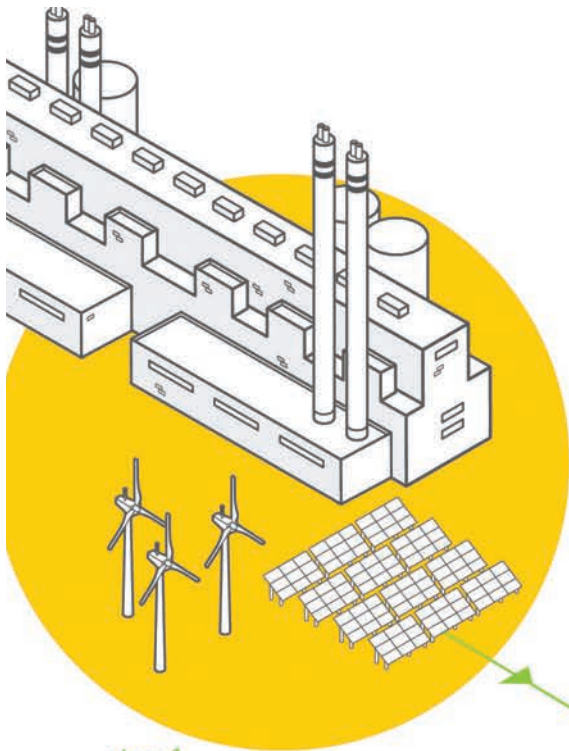
To qualify for an at-large scholarship, the student must have a parent/guardian that is an active PEC member and the student does not attend a local high school (listed above). Eligibility details for non-traditional and at-large scholarships can be found on the PEC website. Two \$1,000 scholarships are available in this category.





CRITICAL CONNECTIONS: HOW ELECTRICITY GETS TO YOU

The electric grid is considered one of the most complex machines in the world, delivering the electricity we need for everyday life.

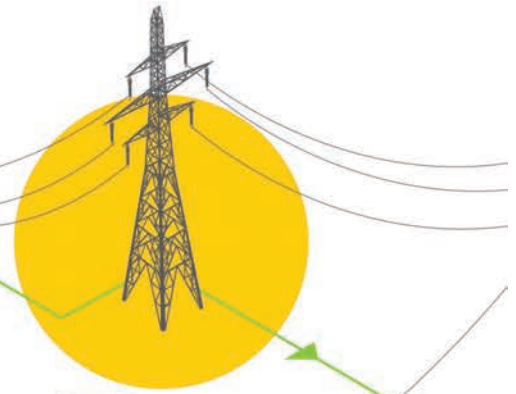


step 1 GENERATION

Power plants generate electricity using a variety of energy sources, like solar, natural gas, nuclear and wind energy.

step 2 STEP-UP TRANSFORMER

A step-up transformer increases the voltage to push the electricity over long distances.



step 3 TRANSMISSION LINES

High-voltage electricity travels over long distances through these lines.

step 5 DISTRIBUTION SUBSTATION

These substations lower the voltage again so the electricity is ready to travel on distribution lines.

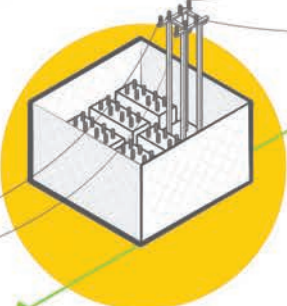
step 6 DISTRIBUTION LINES

Lower-voltage electricity travels through distribution lines, like the ones you typically see on the side of the road.



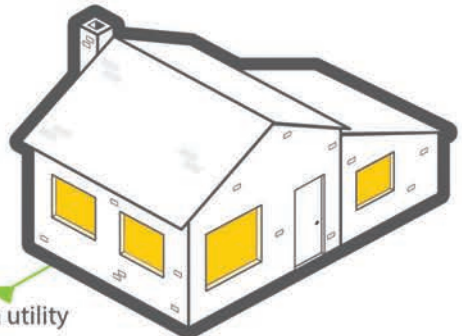
step 4 TRANSMISSION SUBSTATION

Voltage is lowered at a transmission substation so electricity can travel across the local distribution system.



step 7 FINAL STOP

A transformer located on the ground or a utility pole reduces the voltage a final time, then electricity is sent inside your home, school or business.





Price Electric Puzzler

How closely are you reading the *WEC News*? Find the answer to the question below for your chance to receive a \$25 bill credit. Drop off or mail your answer to Price Electric or email your answer to memberservices@PriceElectric.coop. A winner will be drawn from all correct entries the last day of the month.

Last month's
Puzzler winner was
Brenda Heiser.



When is Lineman Appreciation Day?

Answer

Name

Account Number

Phone

Email

Please return to Price Electric Cooperative,
P.O. Box 110, Phillips, WI, 54555

DIRECTOR ELECTION REMINDER

If you are committed to serving and empowering your fellow members, consider joining the PEC Board of Directors! Candidate petitions are due April 5.

The 2024 annual meeting will be held Thursday, June 6, 2024, at Phillips High School, 990 Flambeau Ave, Phillips, WI 54555.



THANK YOU

to the Price County
Tavern League for their
contributions to Wisconsin
electric cooperatives!



Attention 3rd Graders!

You're invited to participate in the
Wisconsin Electric Cooperative Association's

ELECTRICAL SAFETY POSTER CONTEST

Submit an original poster supporting
electrical safety to PEC by April 29, 2024
for a chance to win a \$25 gift card. The
top three posters will be entered into the
statewide poster contest for a chance to
win one of three prizes:

- 1st Place: Chromebook
- 2nd Place: \$100 Gift Card
- 3rd Place: \$75 Gift Card

Posters should be at least
8.5x11 inches, but no larger
than 11x14 inches.

Entries must include completed
entry form and the student's
name on the back of the poster.

NOTICE

The May
issue of *WEC
News*, which
will include
your annual
report, will
be arriving
late. It is
anticipated
to arrive the
second full
week of May.

Jeff Olson, President/CEO

W6803 Springs Drive, P.O. Box 110, Phillips, WI 54555
715-339-2155 • 800-884-0881
www.PriceElectric.coop

Office Hours: Monday–Friday, 7:30 a.m.–4 p.m.

Amy Klimowski, Editor



Price Electric
Cooperative

Your Touchstone Energy® Partner